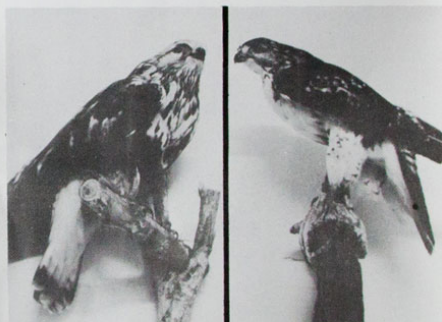




The McCone County Museum in Circle, Montana has recently acquired the thirty-five-year accumulated wildlife collection of Orville Quick and his sons, Ronald and Larry.

This collection is now housed in the old Northern Pacific Woolhouse building which was moved to the museum grounds in south Circle.

Mounted birds and animals of Eastern Montana are set in their natural habitat.



McCone County Museum Circle, Montana 59215

No. 2 — 1986

Located on Highway 200



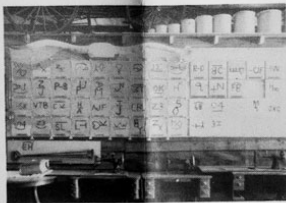


We invite you to visit the McCone County Museum in Circle, Montana, on Highway 200 — south edge of town. We have about five thousand items on display — items of interest to everyone in the family — young and old.

The Pioneer Historical Memorial Plaque is on display in the office. It contains the names of more than two hundred pioneers and homesteaders who have lived and died in our area, many living to be in their nineties.



The Circle Chamber of Commerce and Agriculture Welcomes you to Circle



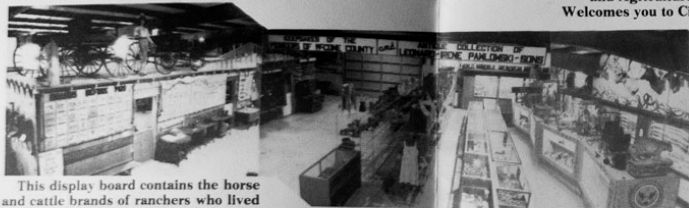
More cattle brands of early stockmen before 1920



Indian Artifacts



Creamery — Blacksmith Shop — Clothing Store



This display board contains the horse and cattle brands of ranchers who lived in the area before 1920. Notice the Old Circle brand in the center of the board on the left. This was the brand of the old Mabrey Cattle Corporation. They started about 1884, locating on the Redwater River. It was the original Circle Ranch and Major Seth Mabrey, a Major in the Confederate Army during the Civil War, was the President of the Corporation.

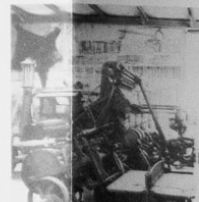
General Display Area



Hunting, Fishing, and Furs



More than a hundred rifles, shotguns, and pistols on display



The Old "Circle Banner" Job Press, Linotype, and Printing Press



Many souvenirs of Pioneer Residents



The blacksmith shop played an important part in the life of the homesteader. The forge was probably the most important item in the blacksmith shop. Various tools were used for special purposes; as shaping horseshoes, holding and sharpening plowshares.



Our Mascot— The Western Cowgirl



Military Display



Living Room and Kitchen Scenes — Replica Homesteaders Shack



Sheep Wagon and Lambing T-Pee

1925 Model T Ford



Grain Fanning Mills
Corn Shellers—Corn Planter



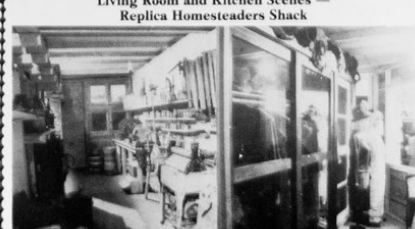
Collection of
Implement Seats



Cream Separators and
Harness Horses



Agricultural Tools
and Equipment



General Store and Clothing Department —
Replica Mercantile Store



Clocks and Lamps

Museum Hours
Open Year Around
Weekdays:
9 a.m. to 5 p.m.

(Design by O.M. Quick, 1981)
(Photos by B. Molins)